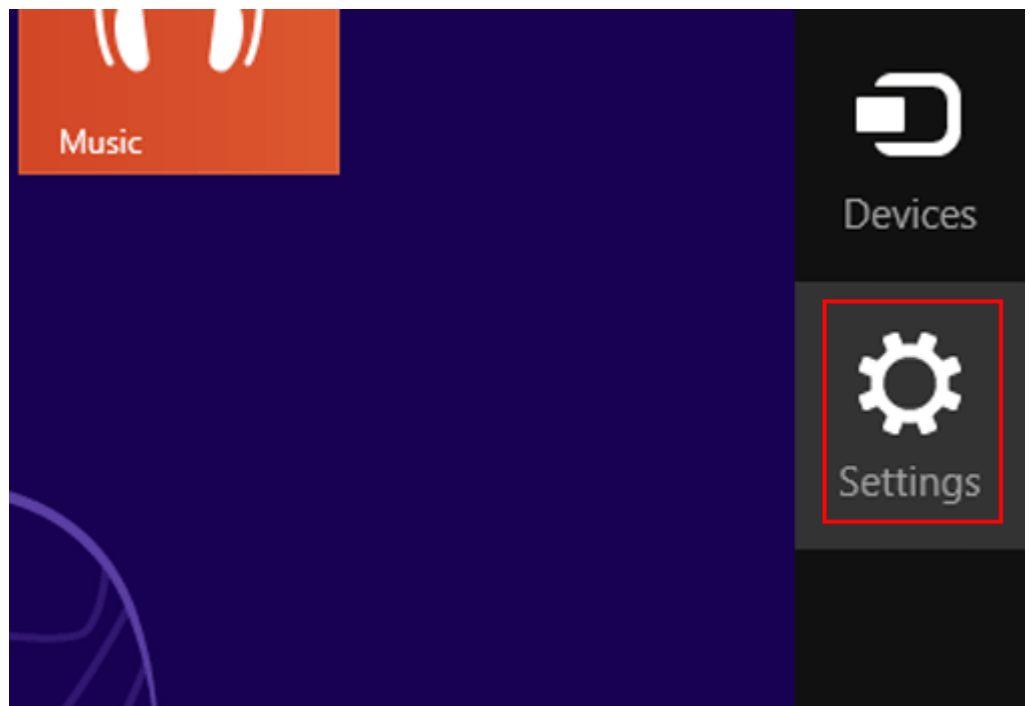


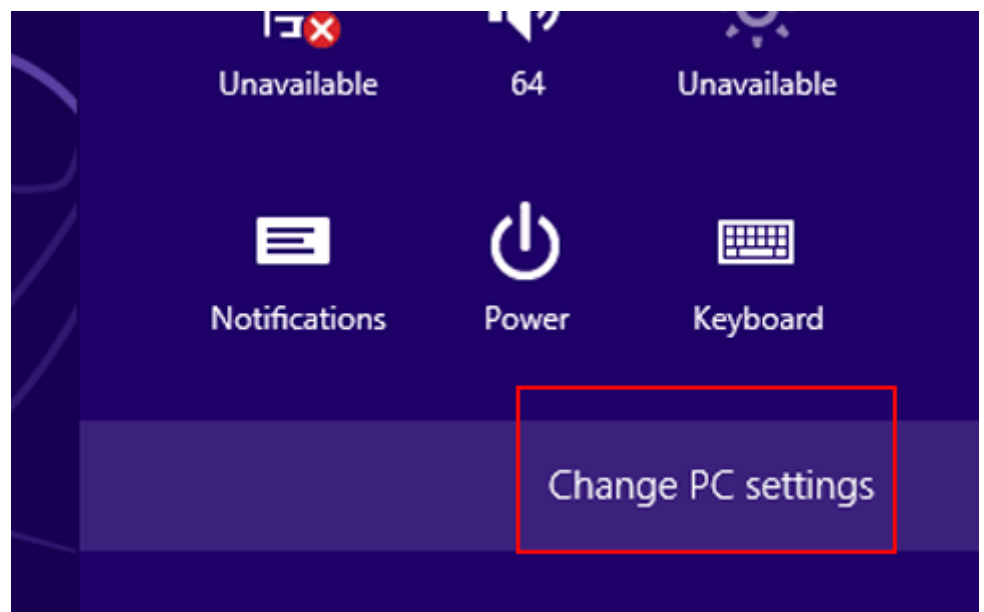
Disable driver signature enforcement in Windows 8, 8.1, 10

Disable Once

1. Open **Charms Menu** pressing **WIN** key + **C** key and select **Settings**.



2. Click **Change PC settings** on the bottom.



3. Choose **General** on the left and click **Restart now**.

PC settings

- Activate Windows
- Personalize
- Users
- Notifications
- Search
- Share
- General**
- Privacy
- Devices
- Ease of Access
- Sync your settings
- HomeGroup
- Windows Update

Language
Add or change input methods, keyboard layouts, and languages.
[Language preferences](#)

Available storage
You have 51.0 GB available. See how much space your apps are using.
[View app sizes](#)

Refresh your PC without affecting your files
If your PC isn't running well, you can refresh it without losing your photos, music, videos, and other personal files.
[Get started](#)

Remove everything and reinstall Windows
If you want to recycle your PC or start over completely, you can reset it to its factory settings.
[Get started](#)

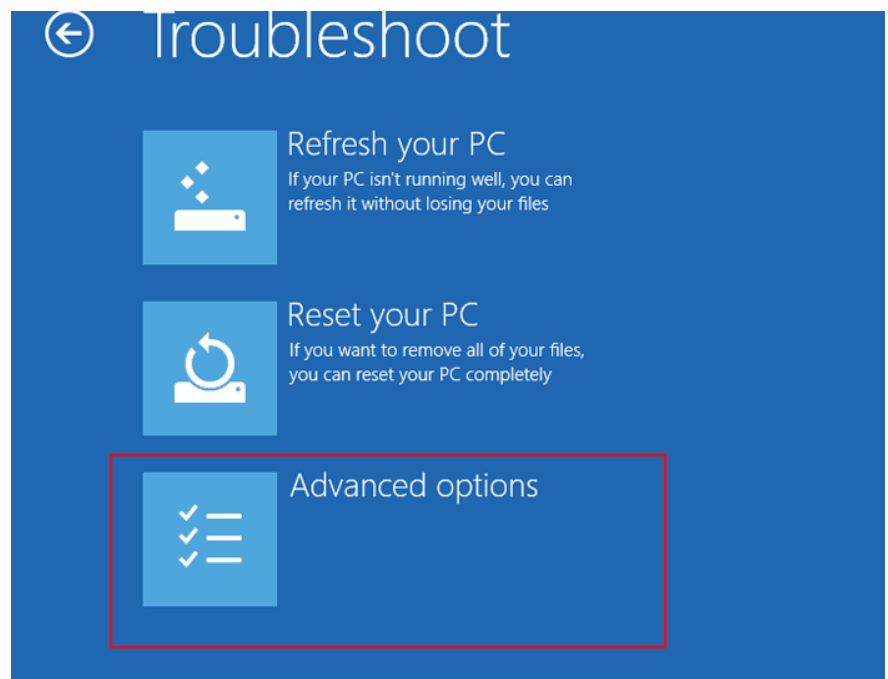
Advanced startup
Start up from a device or disc (such as a USB drive or DVD), change Windows startup settings, or restore Windows from a system image. This will restart your PC.
[Restart now](#)

4. After restarting, click **Troubleshoot**.

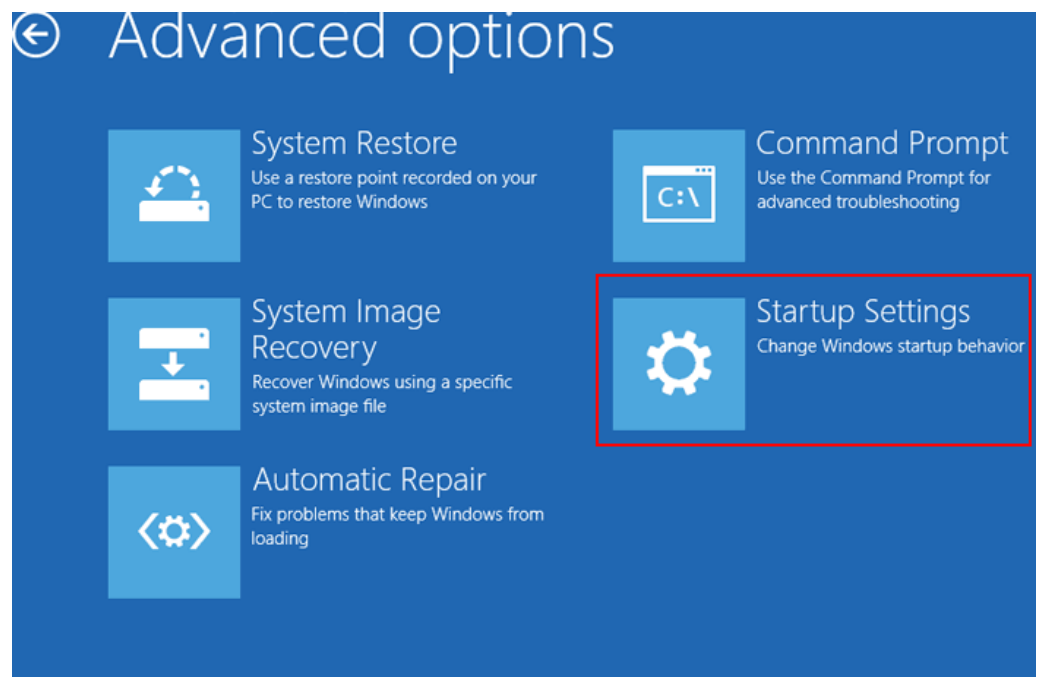
Choose an option

- Continue**
Exit and continue to Windows 8
- Troubleshoot**
Refresh or reset your PC, or use advanced tools
- Turn off your PC**

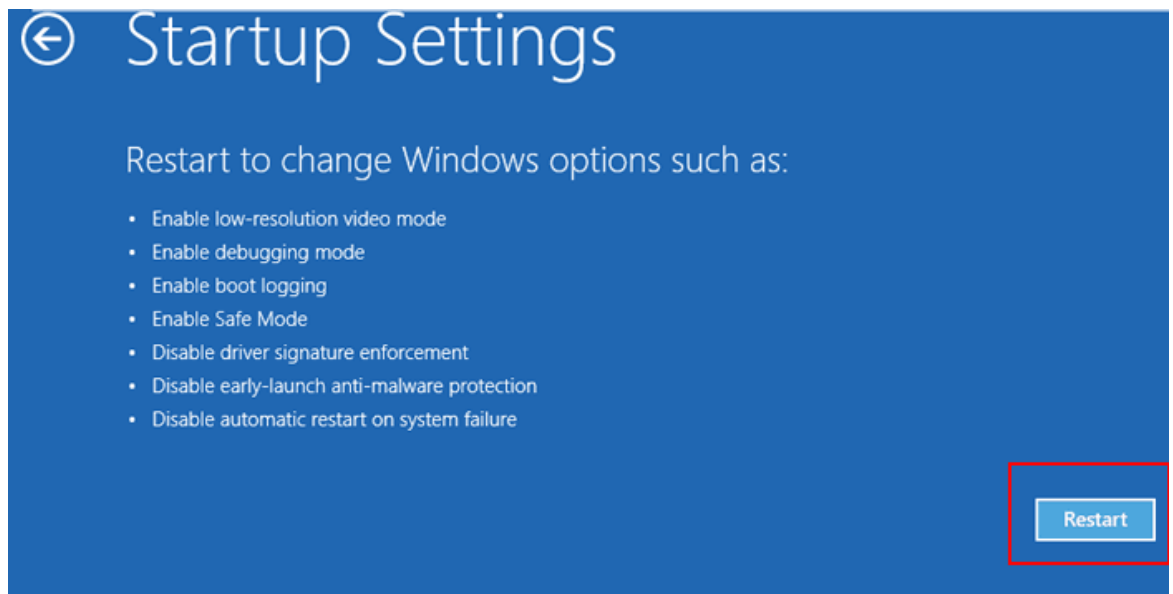
5. Chose **Advanced options**.



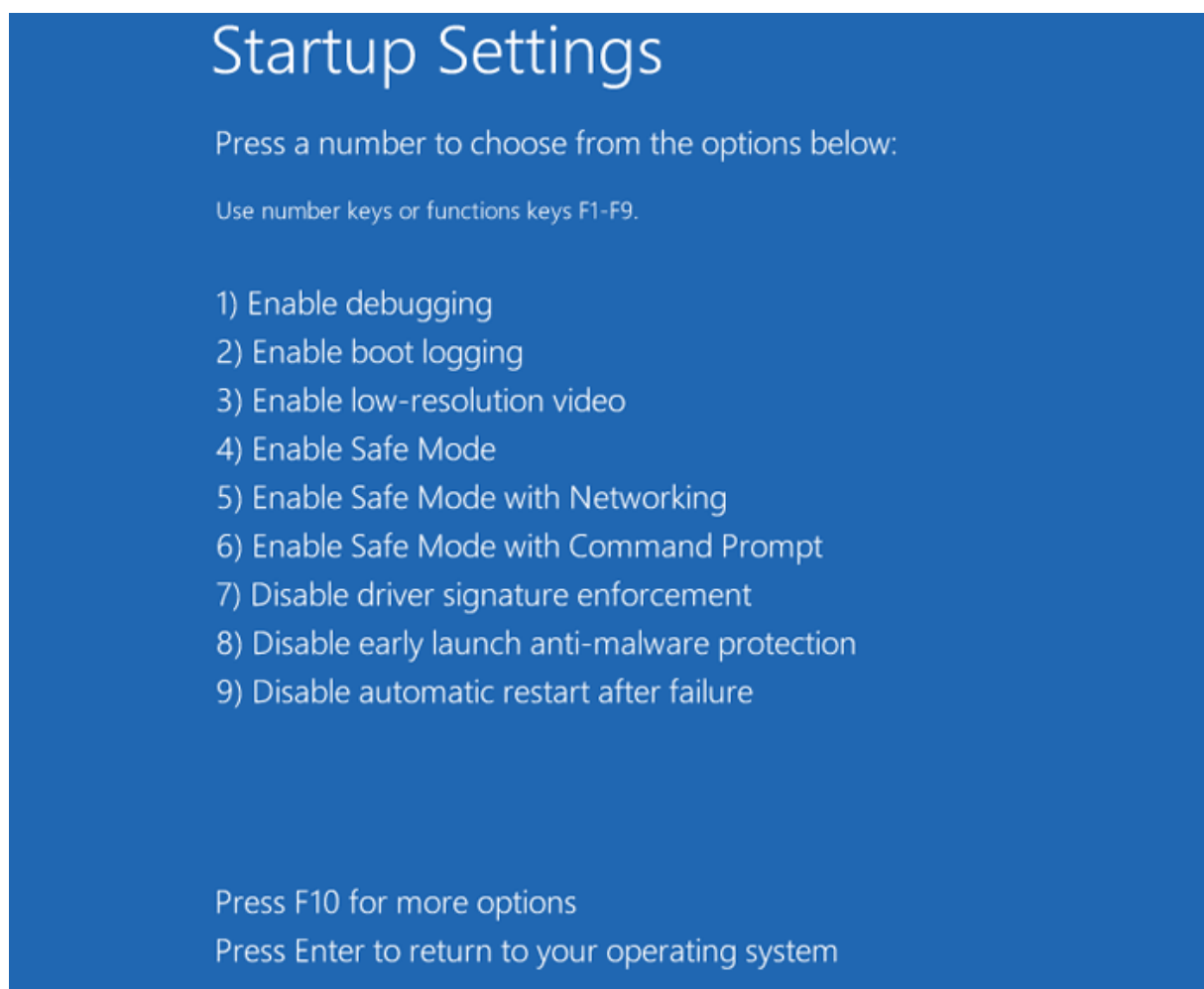
6. Select **Startup Settings**.



7. Click **Restart** button.

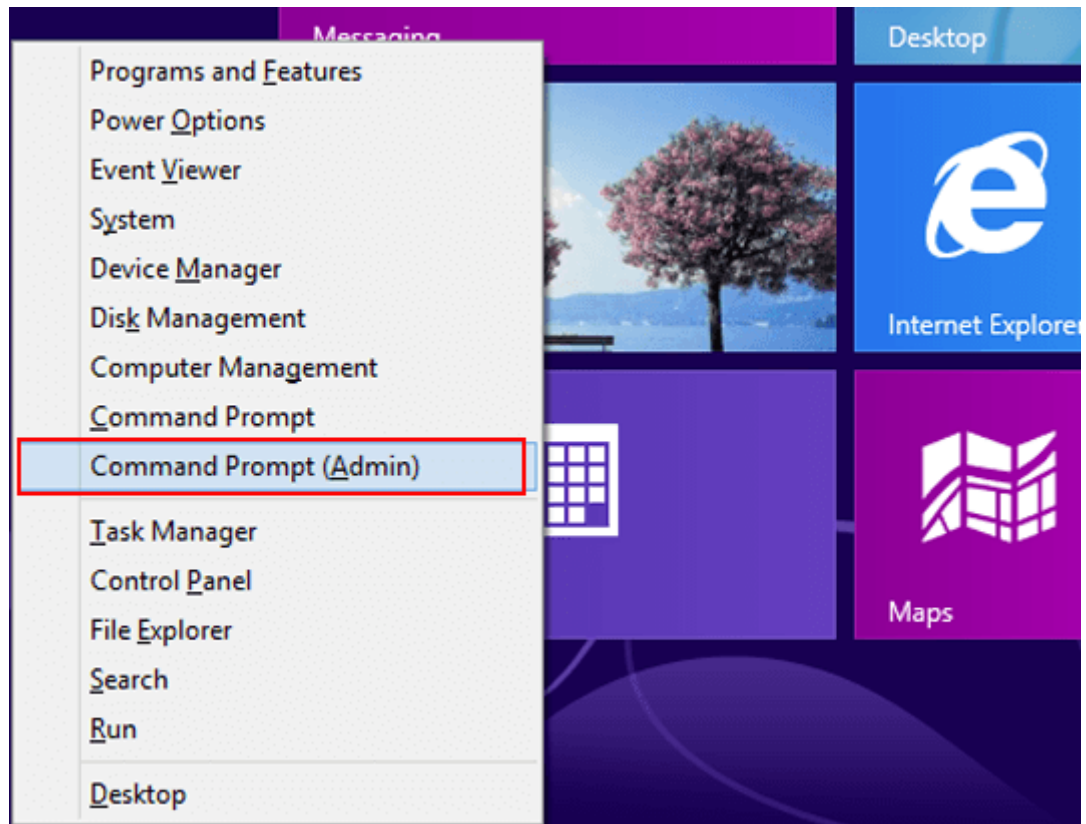


8. Press **7** or **F7** to choose **Disable driver signature enforcement**.

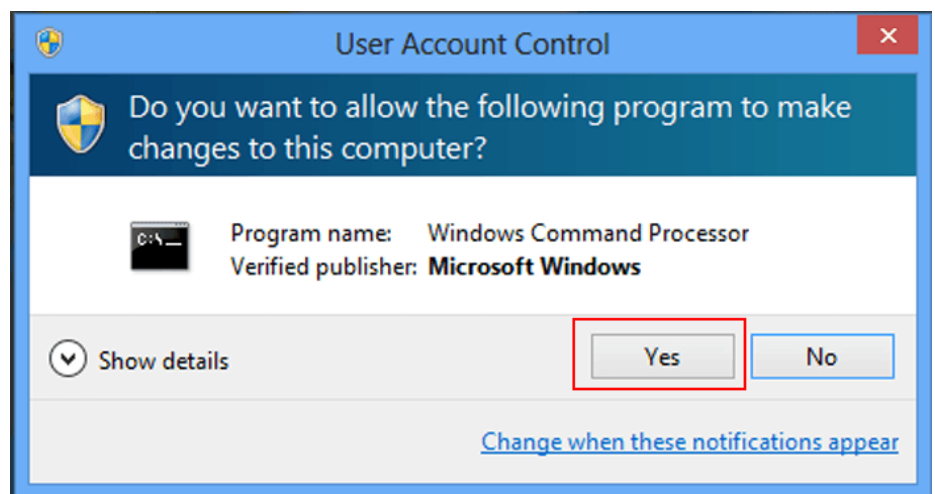


Now you can install unsigned driver. Please note that the setting will return to its original state after next restarting.

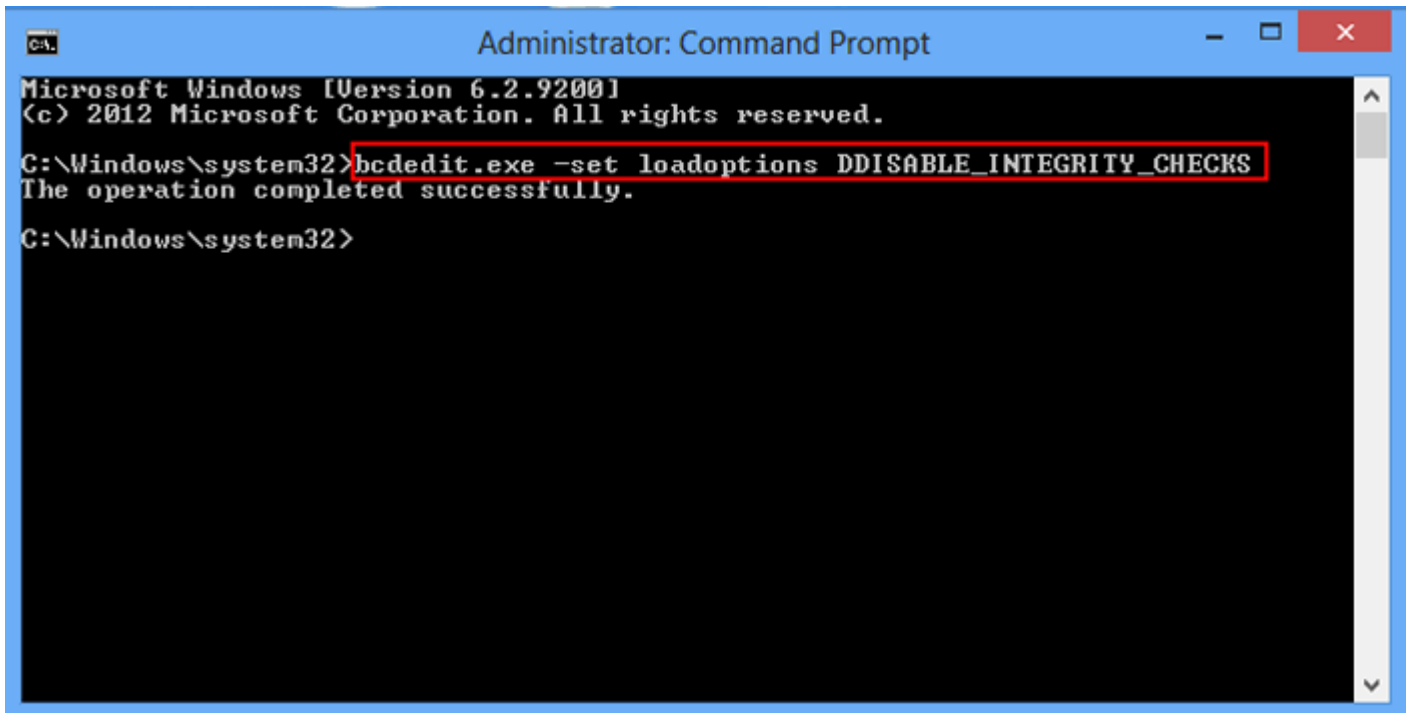
1. Press WIN key + X key at the same time to open the **Quick Access Menu**, and then select **Command Prompt (Admin)** in it.



2. Click **Yes** in the dialog box.



3. Type the command “**bcdedit.exe -set loadoptions DDISABLE_INTEGRITY_CHECKS**” and press **Enter**.



```
Administrator: Command Prompt
Microsoft Windows [Version 6.2.9200]
(c) 2012 Microsoft Corporation. All rights reserved.
C:\Windows\system32>bcdedit.exe -set loadoptions DDISABLE_INTEGRITY_CHECKS
The operation completed successfully.
C:\Windows\system32>
```

4. Restart the computer.

Now you can install unsigned driver permanently.